



Brian Sandoval
Governor



Richard Whitley
Director

State of Nevada
Department of Health and Human Services

Seclusion and Restraint

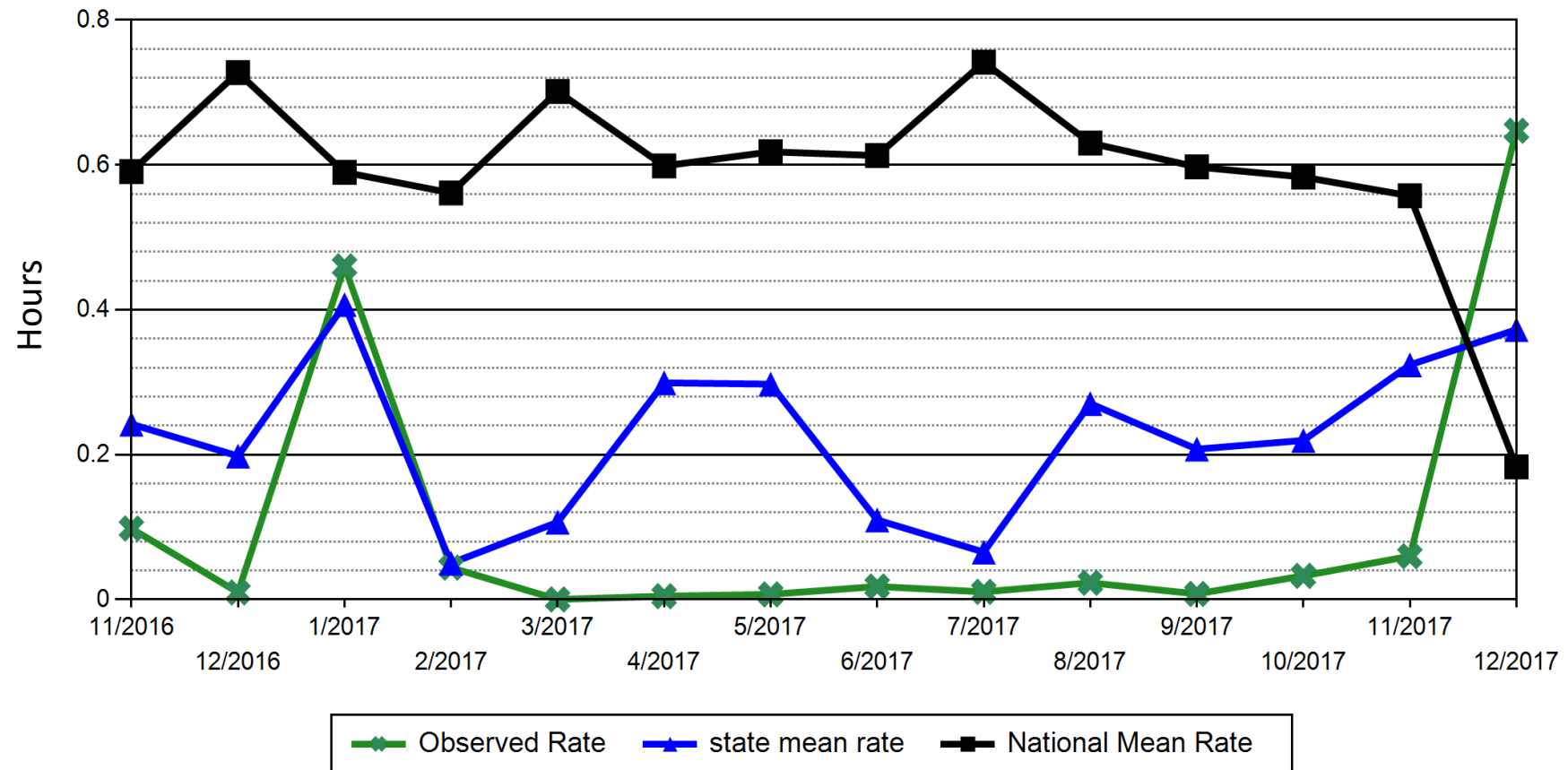
Division of Public and Behavioral Health: Clinical Services
DuAne Young, Deputy Administrator
March 1, 2018





PHYSICAL RESTRAINT (NUMBER OF HOURS CLIENTS SPENT IN PHYSICAL RESTRAINT FOR EVERY 1000 HOURS), ADULTS

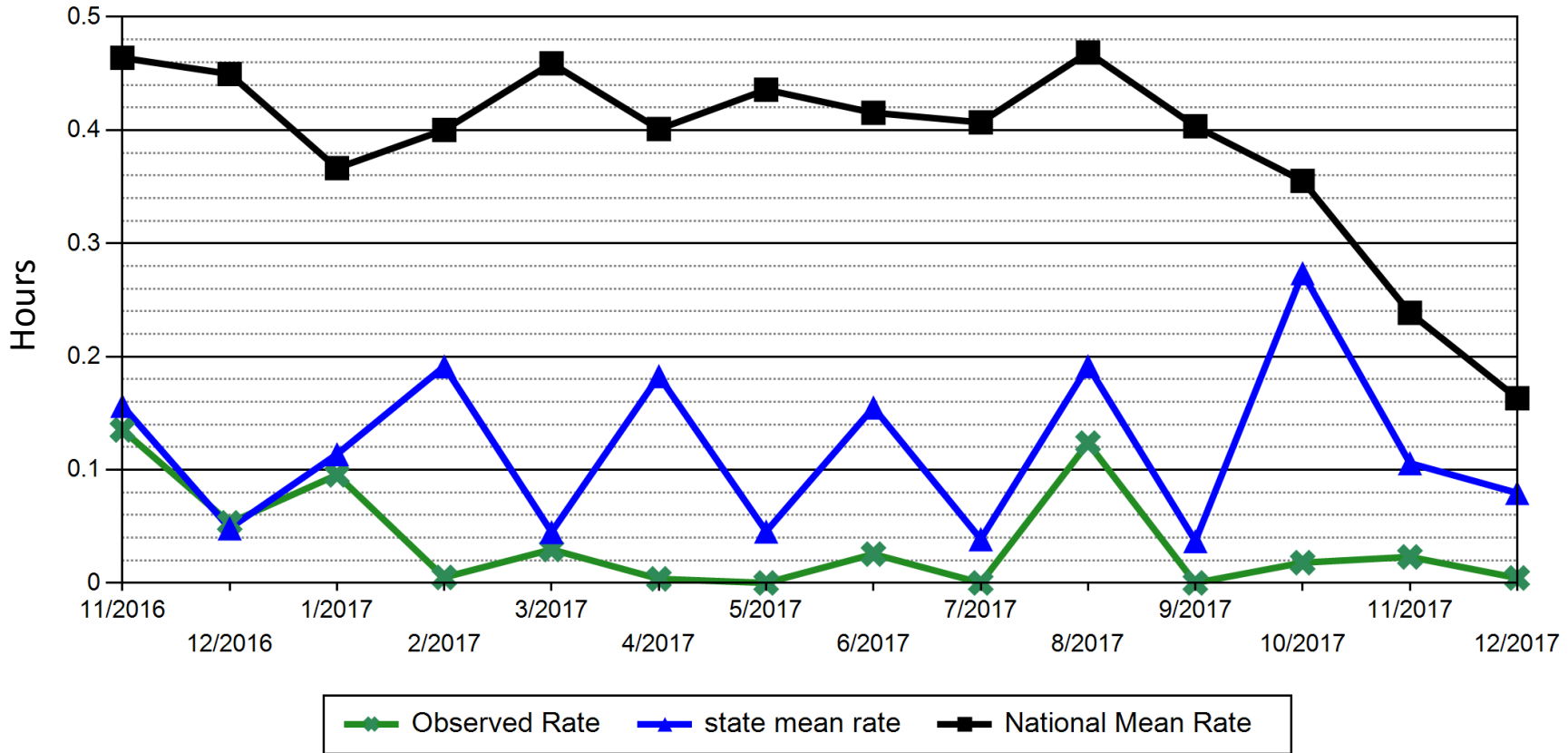
NNAMHS RESTRAINT DATA
(NRI-HBIPS COMPARATIVE REPORT 12/2017)





SECLUSION (NUMBER OF HOURS CLIENTS SPENT IN PHYSICAL RESTRAINT FOR EVERY 1000 PHYSICAL HOURS), ADULTS

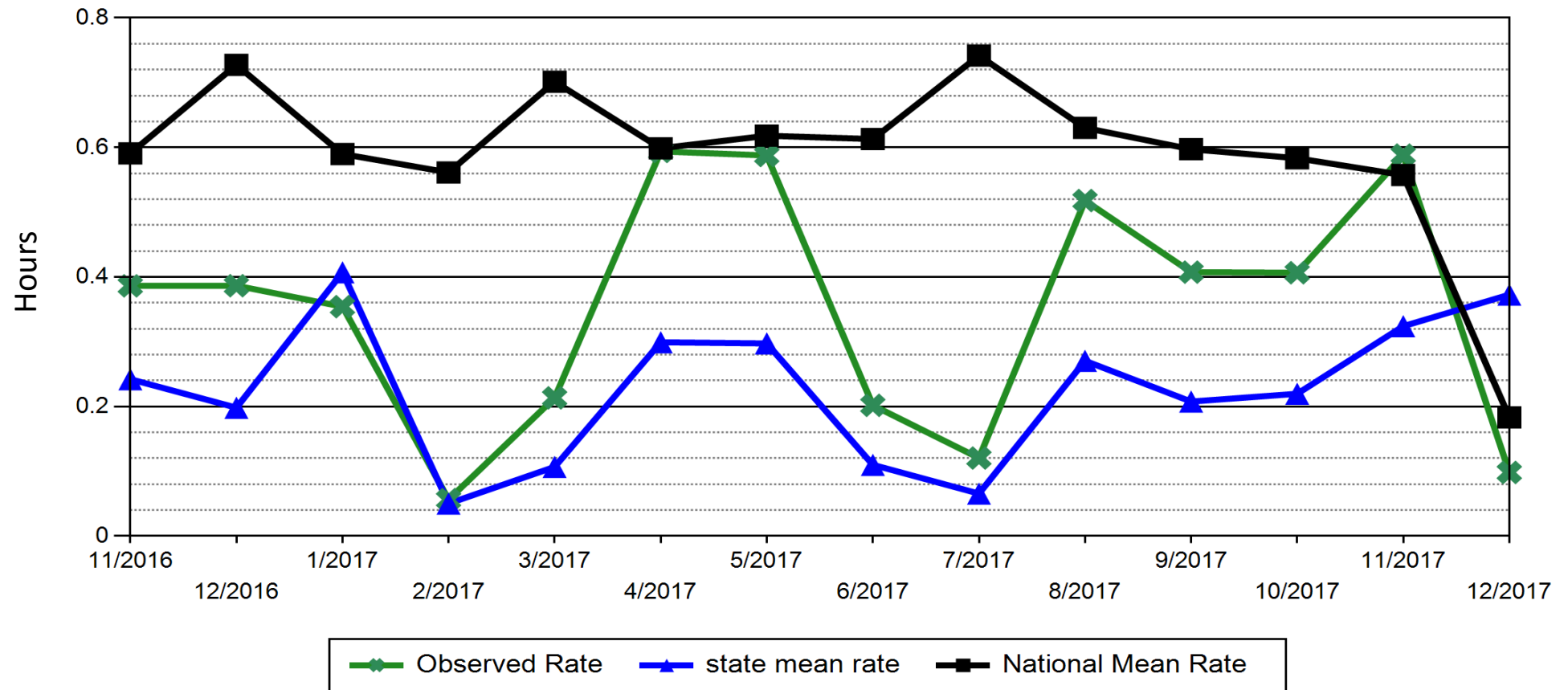
NNAMHS SECLUSION DATA
(NRI-HBIPS COMPARATIVE REPORT 12/2017)





PHYSICAL RESTRAINT (NUMBER OF HOURS CLIENTS SPENT IN PHYSICAL RESTRAINT FOR EVERY 1000 PHYSICAL HOURS), ADULTS

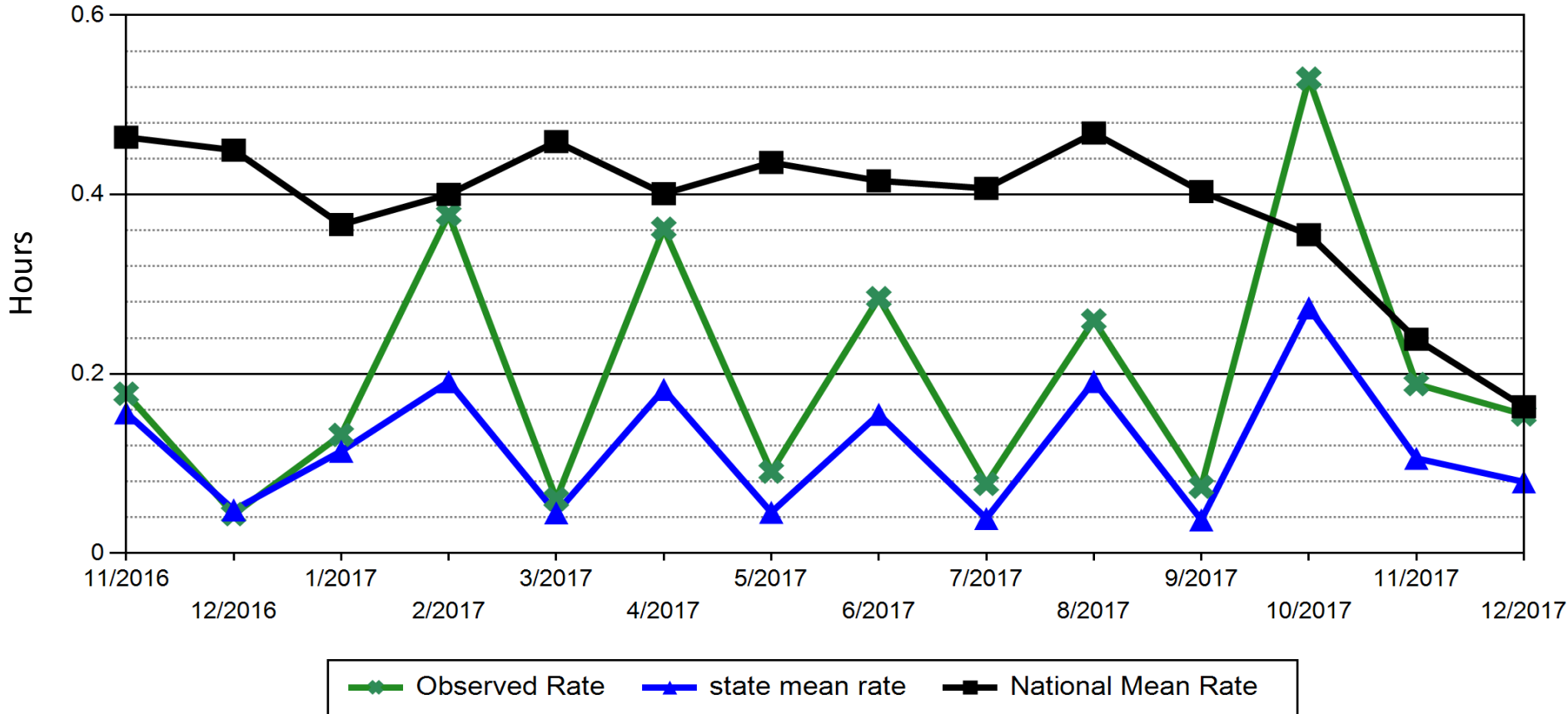
SNAMHS RESTRAINT DATA
(NRI-HBIPS COMPARATIVE REPORT 12/2017)





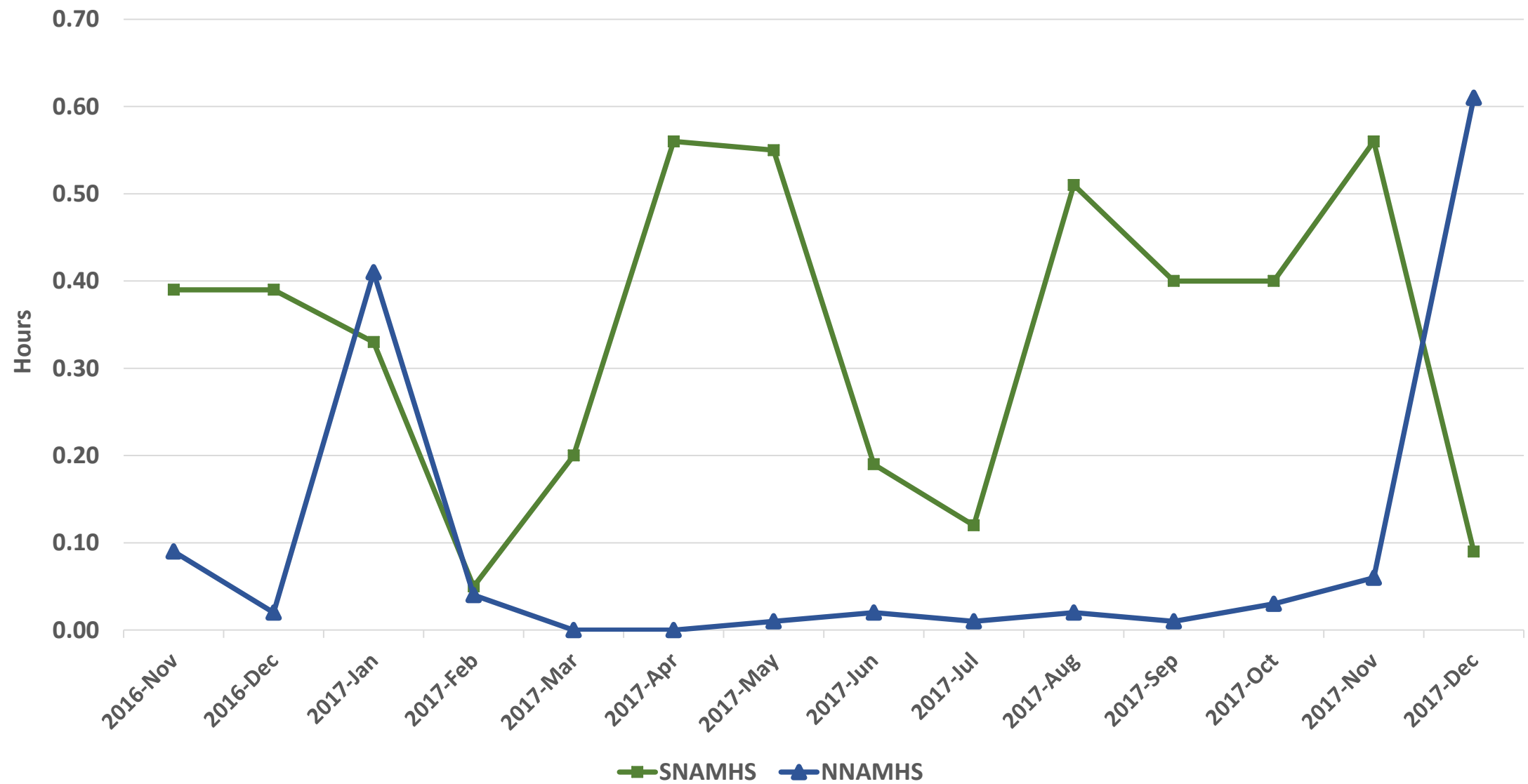
SECLUSION (NUMBER OF HOURS CLIENTS SPENT IN PHYSICAL RESTRAINT FOR EVERY 1000 PHYSICAL HOURS), ADULTS

SNAMHS SECLUSION DATA
(NRI-HBIPS COMPARATIVE REPORT 12/2017)



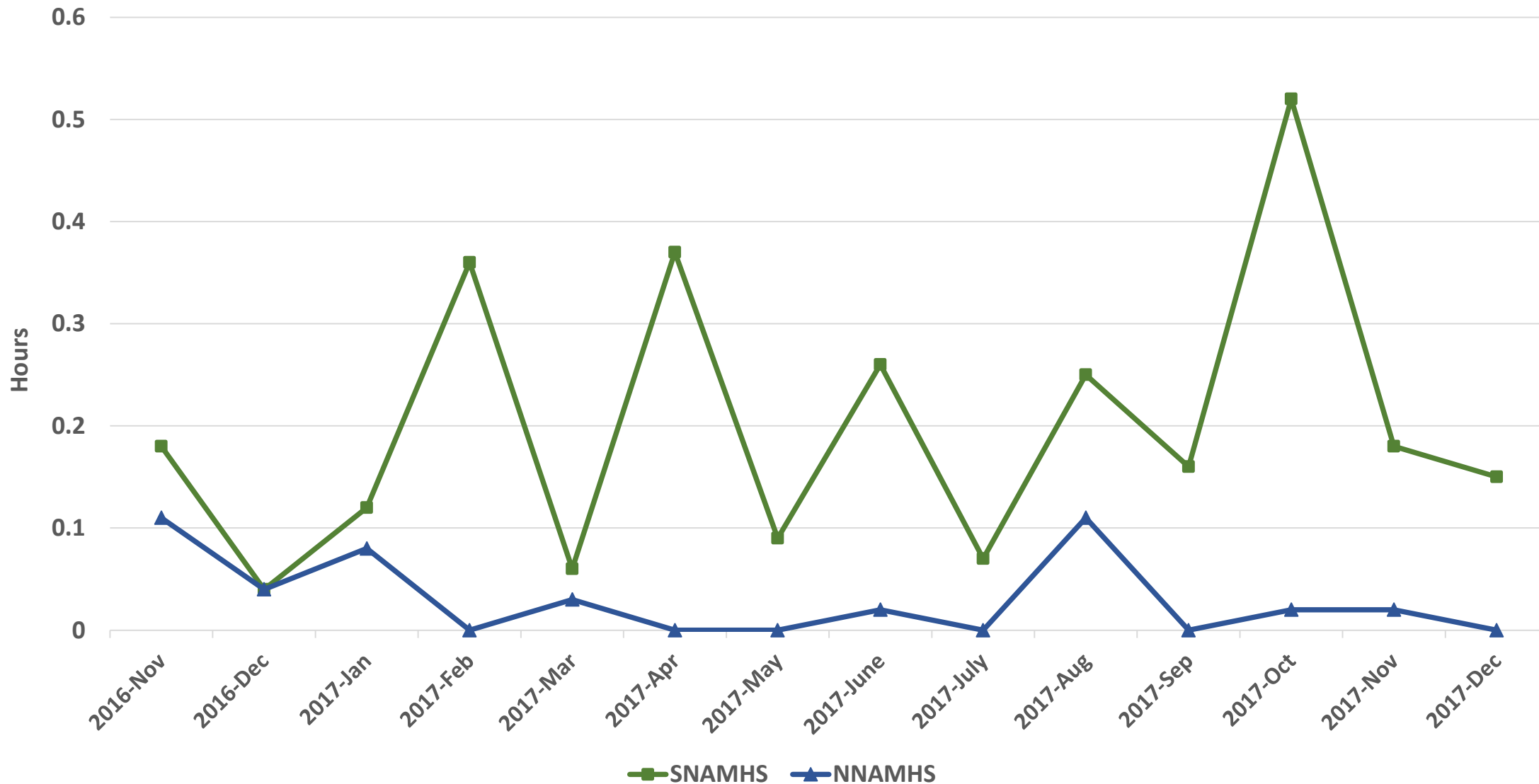


STATEWIDE
Overall Use of Restraints (# of hours clients spent for every 1000 hours)
NRI-HBIPS Comparative Report HAP & BHC 12/2017





STATEWIDE
Overall Use of Seclusion (# of hours clients spent for every 1000 hours)
NRI-HBIPS Comparative Report HAP & BHC 12/2017



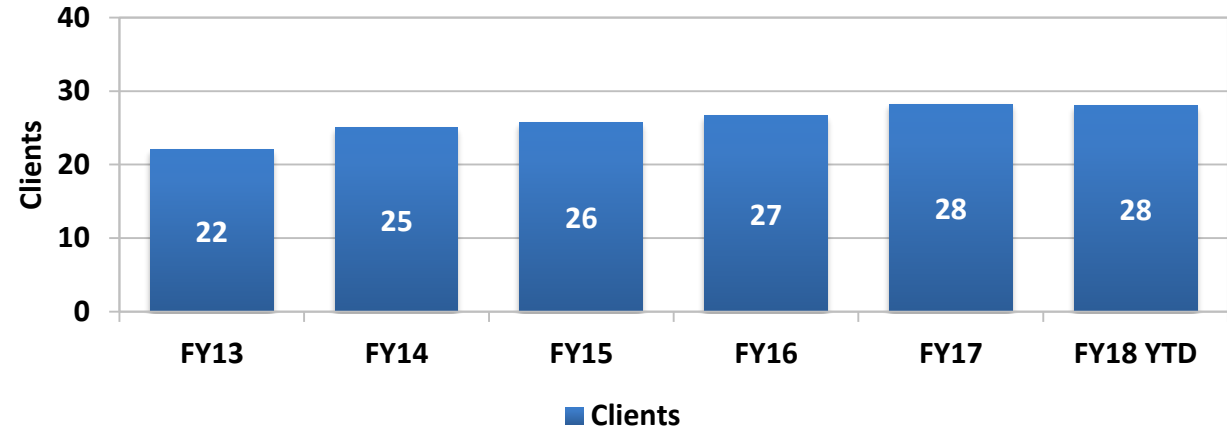


NNAMHS: DINI TOWNSEND HOSPITAL

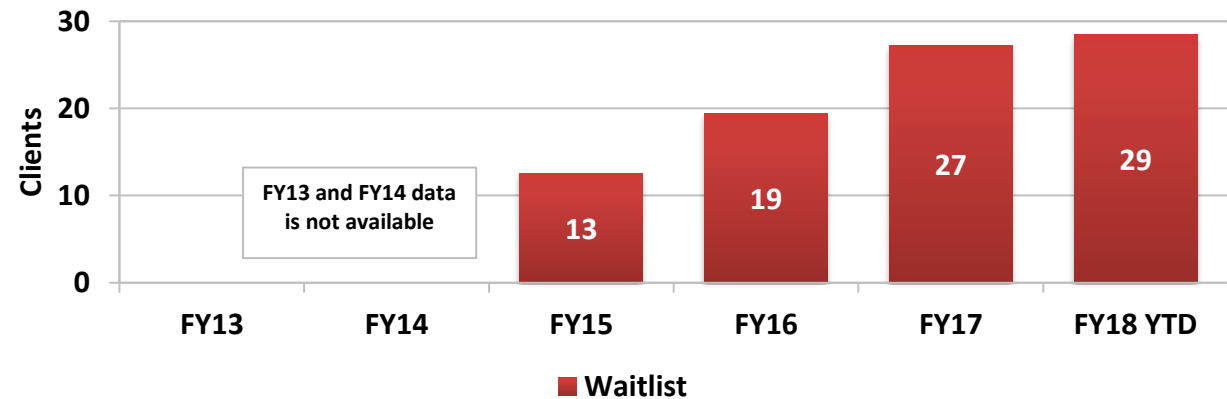
(DHHS Director's Office)

	Clients	Average Length of Stay (Days)	Waitlist
Jul-16	27	10	20
Aug-16	26	11	23
Sep-16	28	9	26
Oct-16	28	13	35
Nov-16	29	13	20
Dec-16	29	18	27
Jan-17	28	11	29
Feb-17	29	17	32
Mar-17	29	13	29
Apr-17	29	14	29
May-17	28	16	28
Jun-17	29	38	29
Jul-17	29	21	29
Aug-17	28	14	30
Sep-17	29	11	30
Oct-17	28	20	28
Nov-17	27	21	27
Dec-17	27	19	27

NNAMHS Dini-Townsend Hospital - Fiscal Year Averages

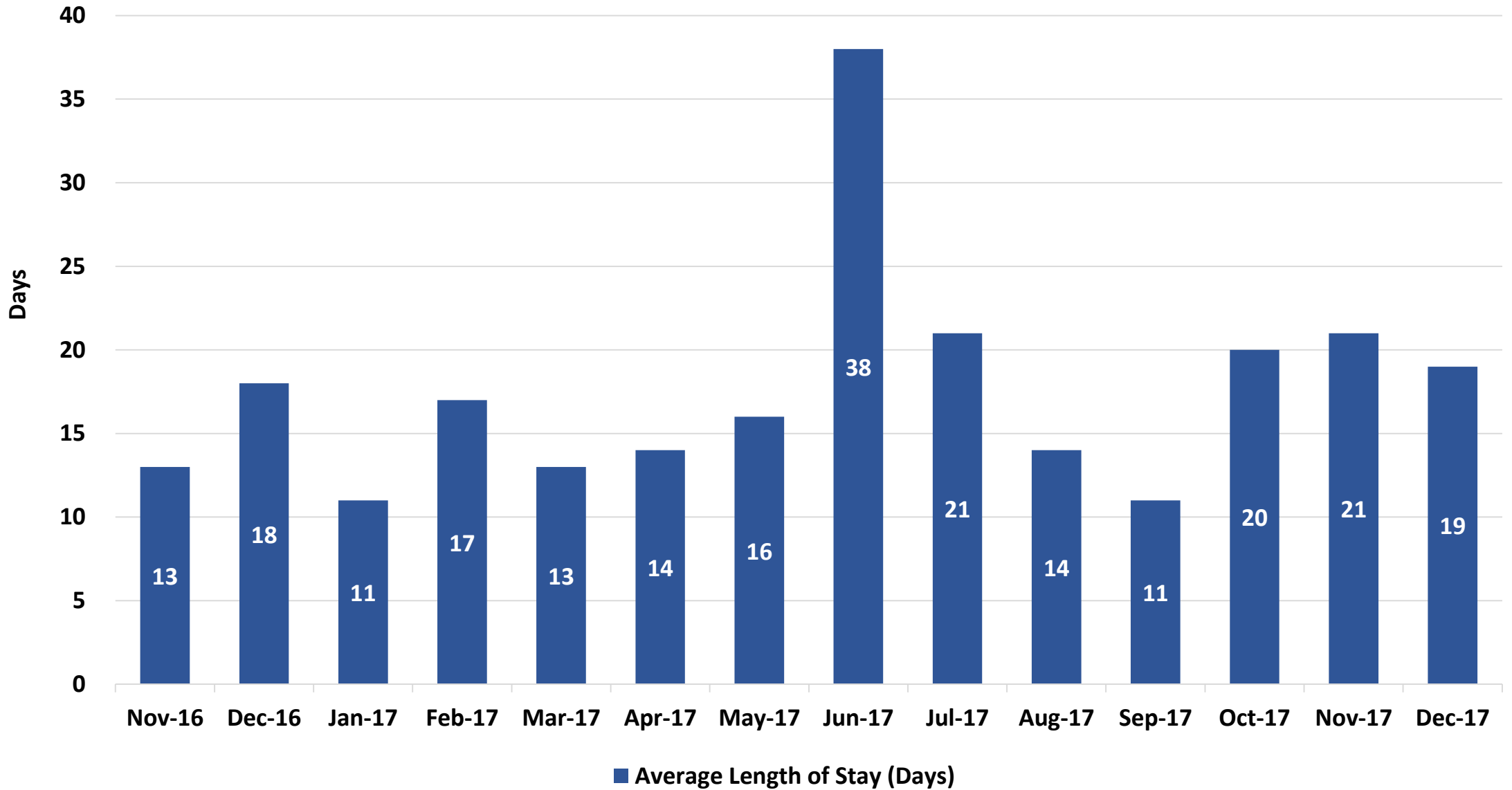


NNAMHS Dini-Townsend Hospital Waitlist - Fiscal Year Averages





NNAMHS Average Length of Stay (Days)

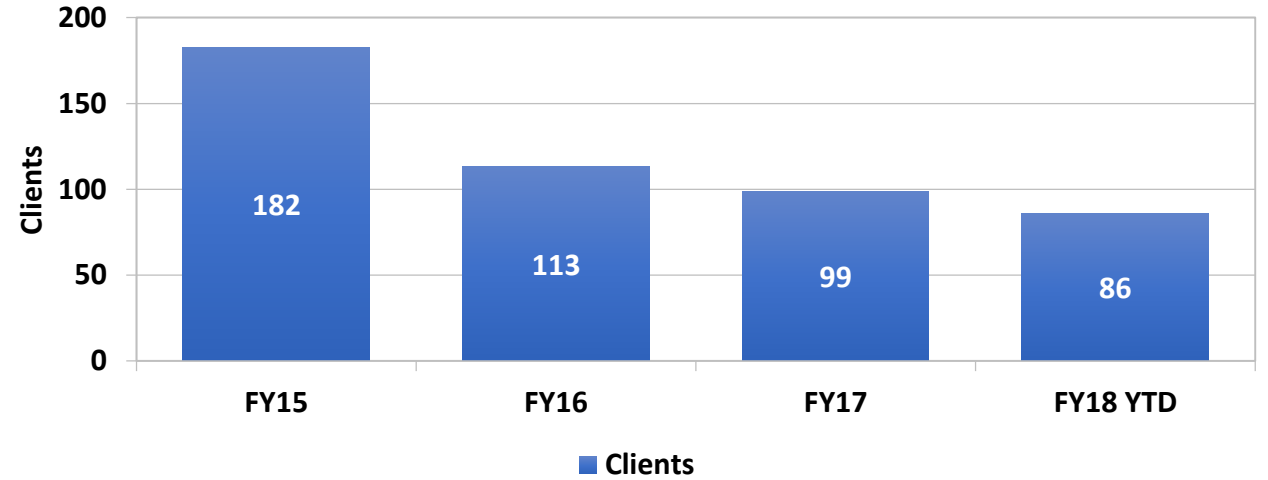




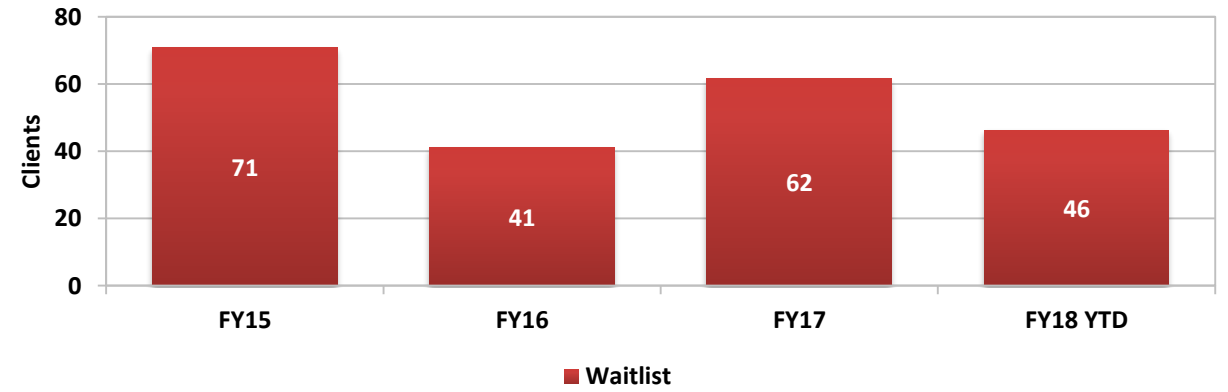
SNAMHS: RAWSON NEAL HOSPITAL (DHHS Director's Office)

	Clients	Average Length of Stay (Days)	Waitlist
Jul-16	98	21	59
Aug-16	102	15	55
Sep-16	105	19	56
Oct-16	106	21	56
Nov-16	105	21	61
Dec-16	106	16	61
Jan-17	104	19	73
Feb-17	97	24	65
Mar-17	96	19	55
Apr-17	94	17	61
May-17	91	13	60
Jun-17	81	17	79
Jul-17	87	21	60
Aug-17	87	16	57
Sep-17	85	11	38
Oct-17	86	13	38
Nov-17	86	14	42
Dec-17	86	11	43

SNAMHS Rawson-Neal Hospital - Fiscal Year Averages

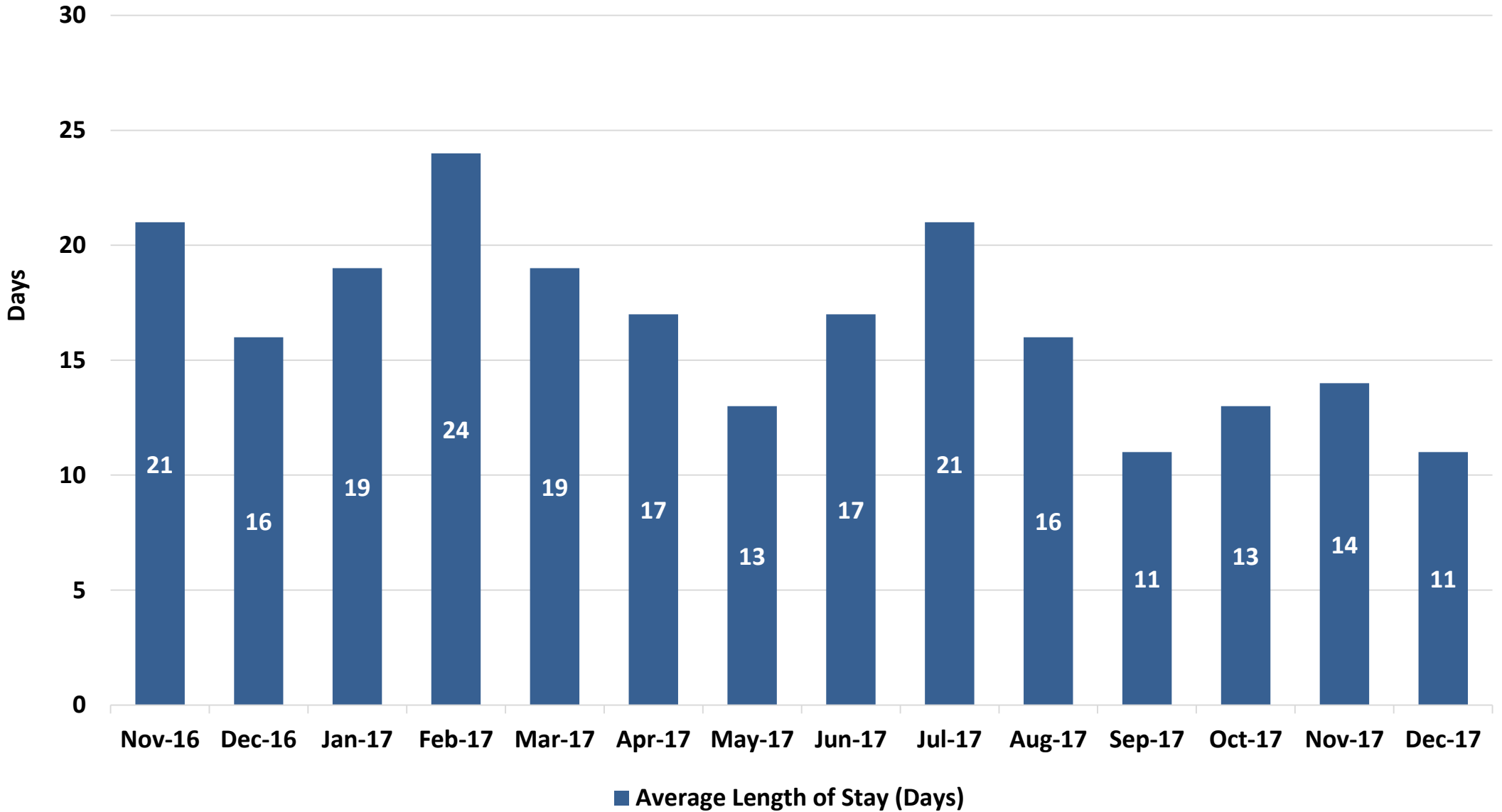


SNAMHS Rawson-Neal Hospital Waitlist - Fiscal Year Averages





SNAMHS Average Length of Stay (Days)





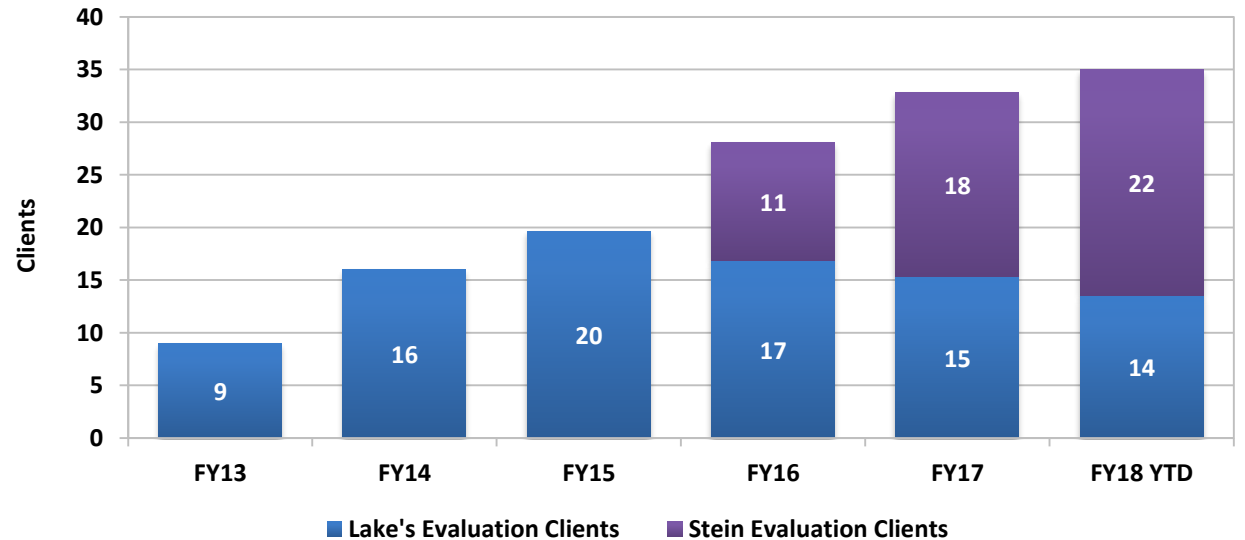
ADULT FORENSIC FACILITIES: EVALUATION CLIENTS

(DHHS Director's Office)

	Lake's Evaluation Clients	Lake's Average Length of Stay (Days)	Stein Evaluation Clients	Stein Average Length of Stay (Days)
Jul-16	14	58	12	71
Aug-16	17	28	13	144
Sep-16	20	87	16	86
Oct-16	17	88	17	75
Nov-16	15	122	21	70
Dec-16	13	88	23	66
Jan-17	13	88	22	87
Feb-17	14	158	15	102
Mar-17	19	31	16	96
Apr-17	18	53	15	75
May-17	13	98	20	72
Jun-17	11	183	20	127
Jul-17	12	151	23	64
Aug-17	9	62	22	75
Sep-17	14	62	17	98
Oct-17	15	60	19	88
Nov-17	16	86	23	63
Dec-17	15	76	25	100

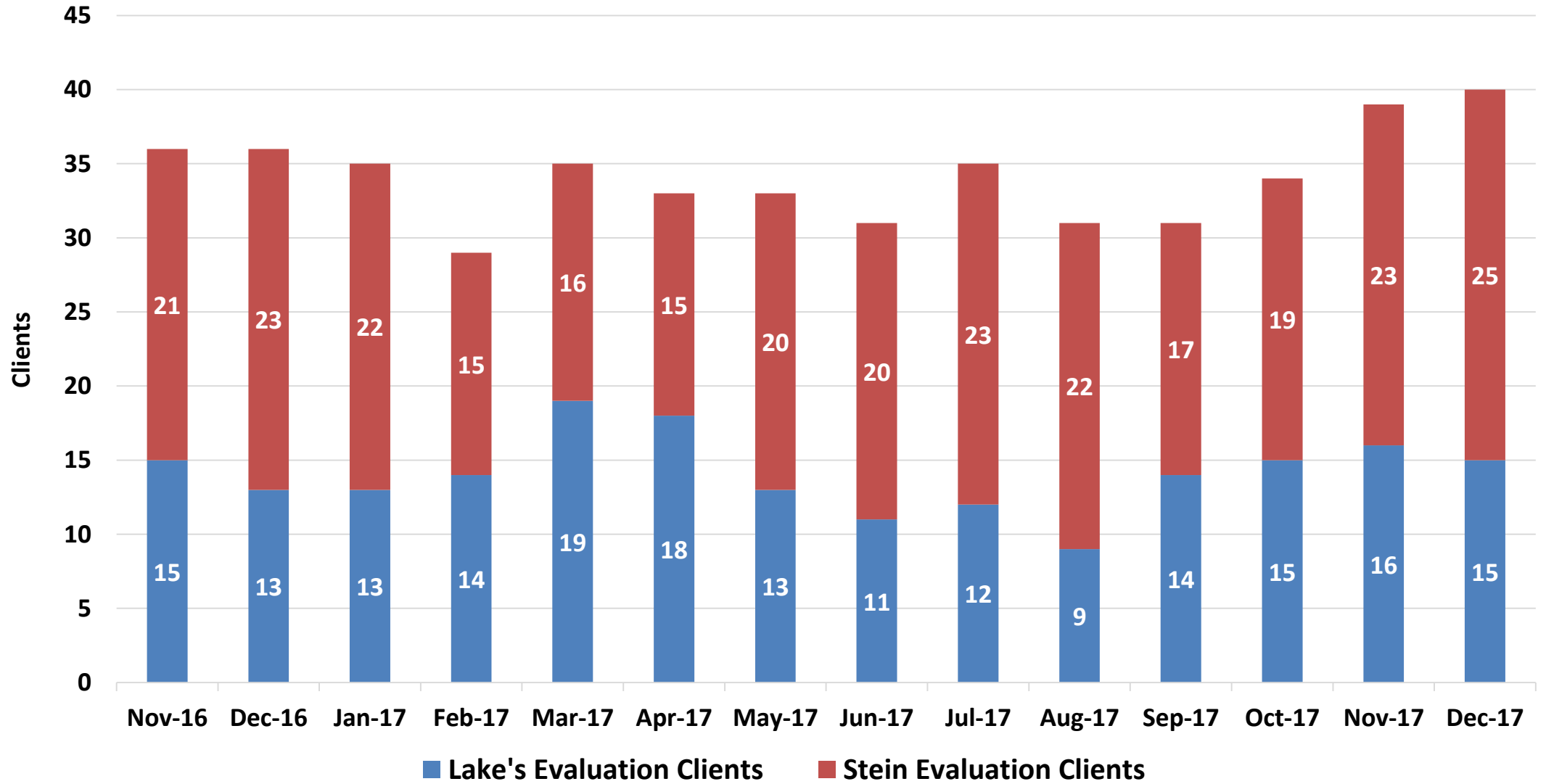
Fiscal Year Averages				
	Lake's Evaluation Clients	Lake's Average Length of Stay (Days)	Stein Evaluation Clients	Stein Average Length of Stay (Days)
FY13	9	98		
FY14	16	61		
FY15	20	94		
FY16	17	84	11	88
FY17	15	90	18	89
FY18 YTD	14	83	22	81

Evaluation Clients - Fiscal Year Averages



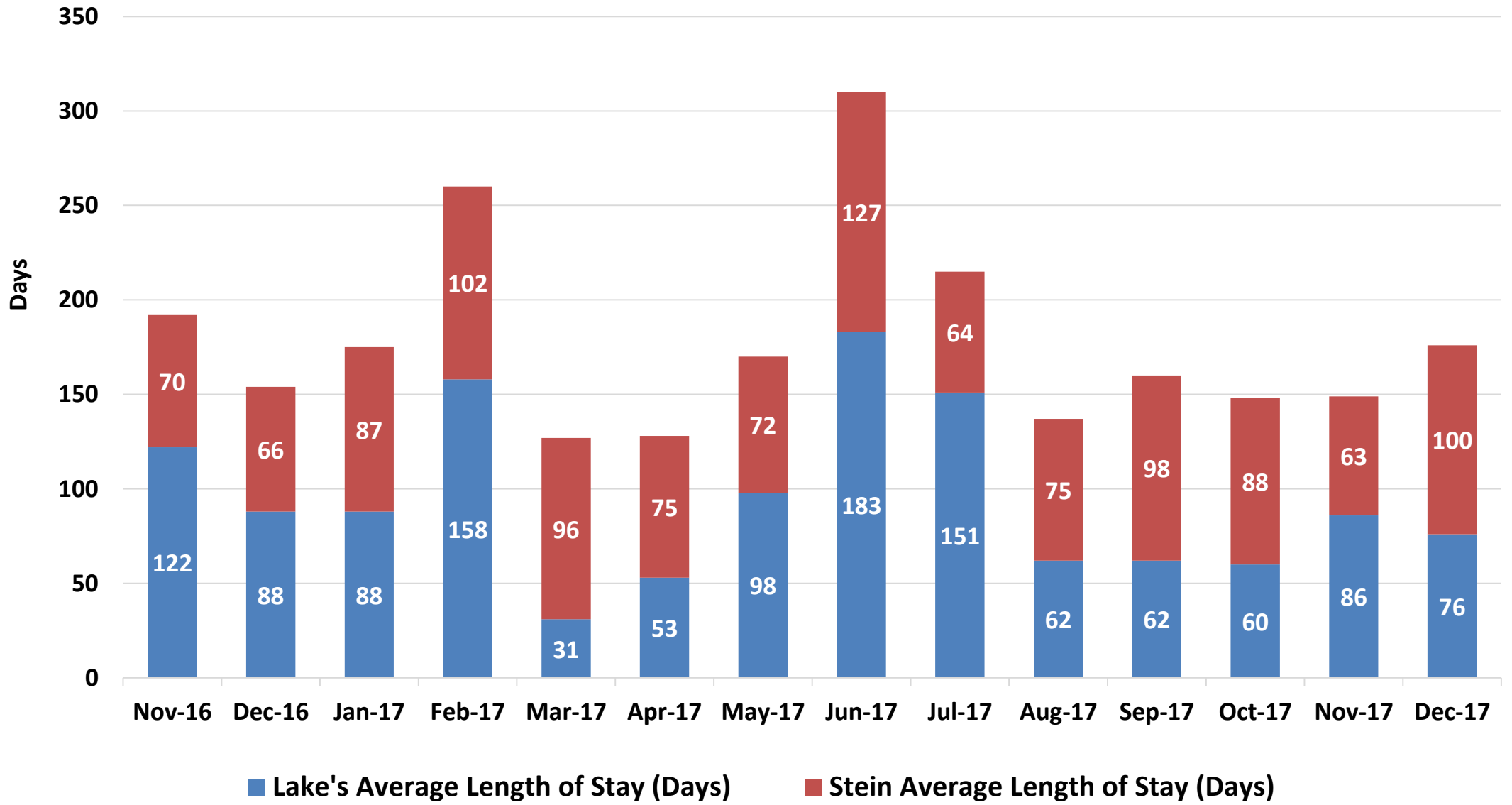


Adult Forensic Evaluation Clients





Evaluation Clients - Average Length of Stay (Days)



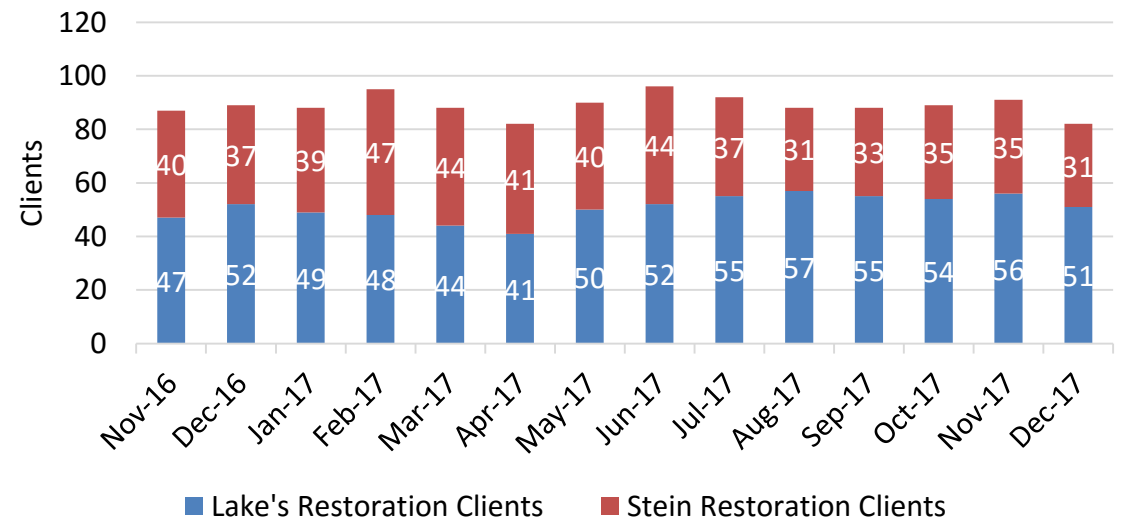


ADULT FORENSIC FACILITIES: RESTORATION CLIENTS (DHHS Director's Office)

	Lake's Restoration Clients	Lake's Average Length of Stay (Days)	Stein Restoration Clients	Stein Average Length of Stay (Days)	Statewide Restoration Waitlist	Statewide Average Wait (Days)
Jul-16	45	62	44	98	15	6
Aug-16	45	100	41	104	16	4
Sep-16	44	102	42	86	17	4
Oct-16	44	118	40	84	20	5
Nov-16	47	106	40	120	14	5
Dec-16	52	113	37	117	14	4
Jan-17	49	116	39	115	22	5
Feb-17	48	105	47	105	16	4
Mar-17	44	76	44	94	12	6
Apr-17	41	110	41	137	21	4
May-17	50	93	40	87	25	6
Jun-17	52	64	44	114	29	6
Jul-17	55	117	37	83	19	4
Aug-17	57	101	31	120	17	5
Sep-17	55	72	33	101	23	5
Oct-17	54	87	35	98	17	5
Nov-17	56	115	35	68	14	6
Dec-17	51	93	31	98	16	4

Fiscal Year Averages						
	Lake's Restoration Clients	Lake's Average Length of Stay (Days)	Stein Restoration Clients	Stein Average Length of Stay (Days)	Statewide Restoration Waitlist	Average Wait (Days)
FY13	45	81				
FY14	48	96				
FY15	50	92				
FY16	49	108	32	88	17	24
FY17	47	97	42	105	18	5
FY18 YTD	55	98	34	95	18	5

Adult Forensic Restoration Clients

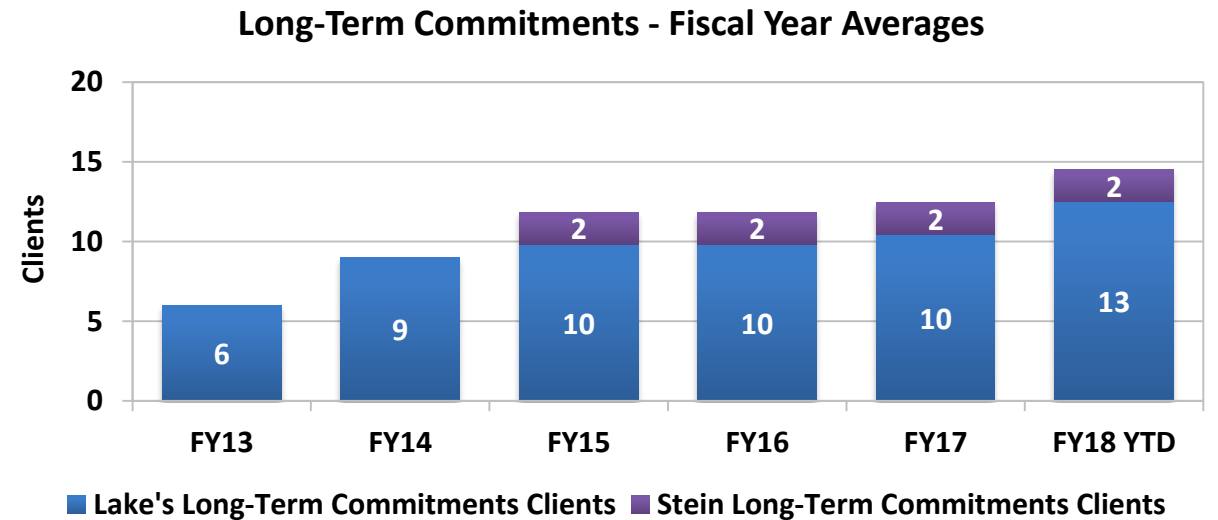
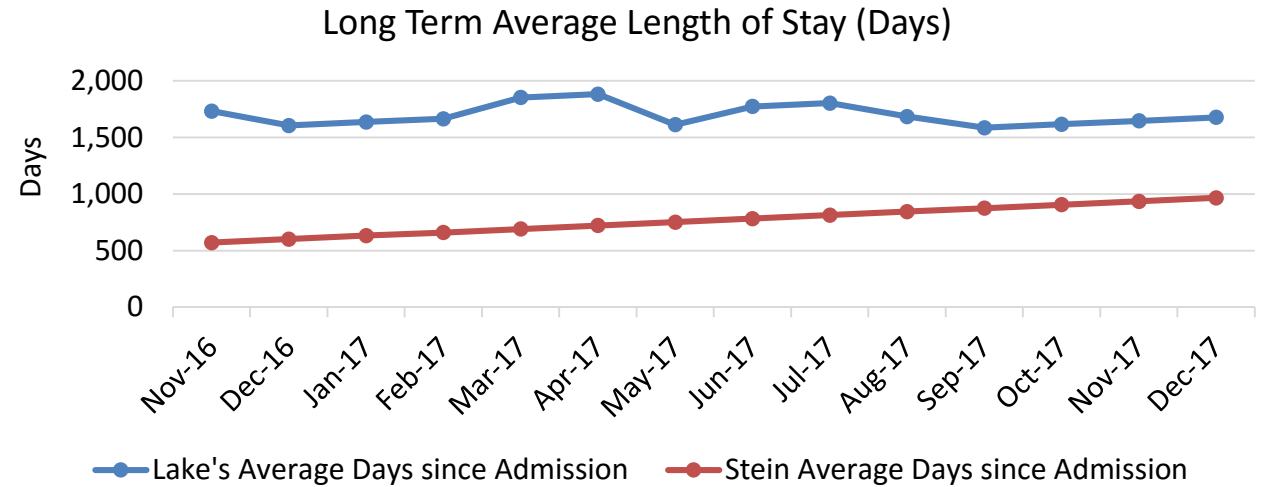




ADULT FORENSIC FACILITIES: LONG-TERM COMMITMENTS

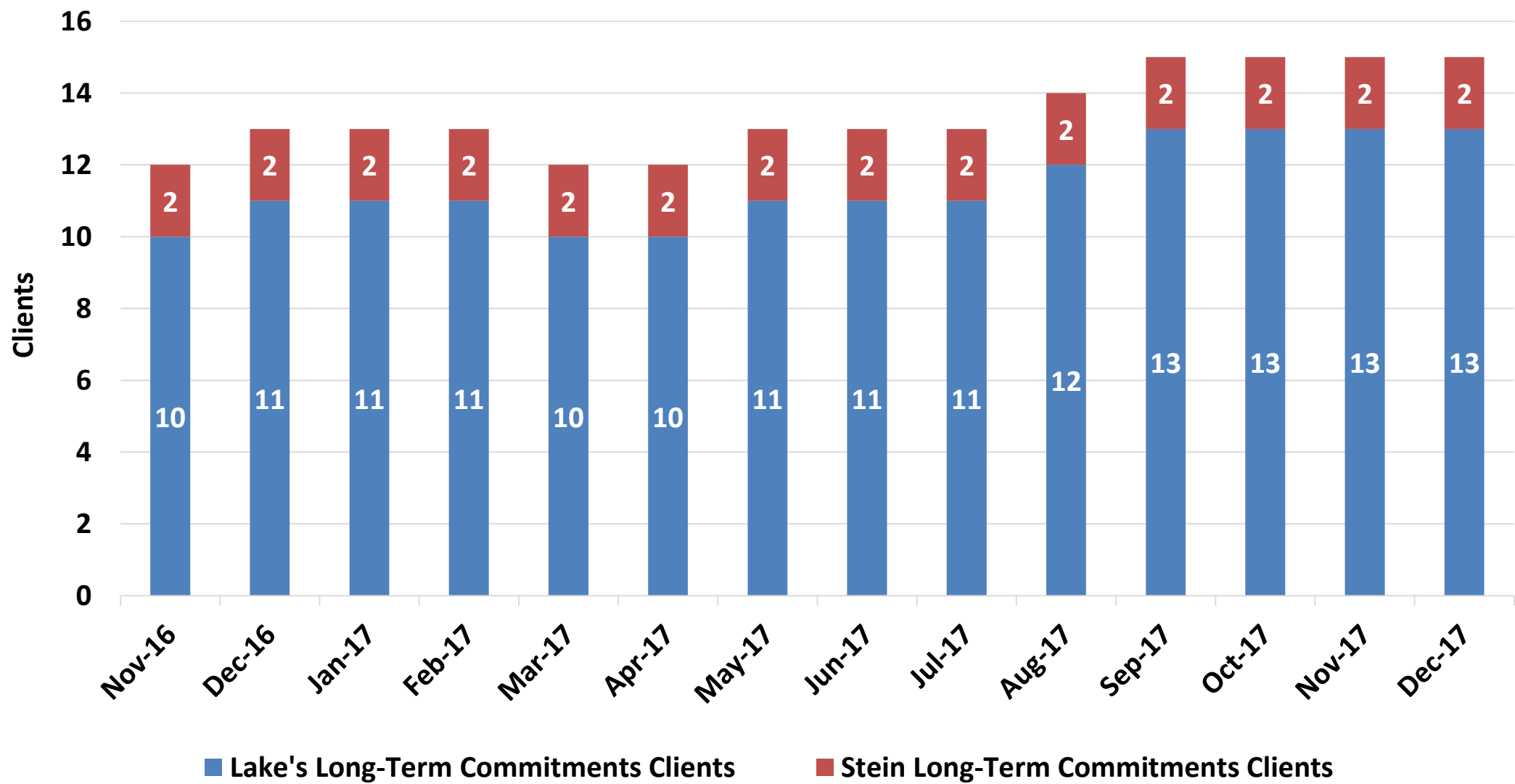
(DHHS Director's Office)

	Lake's Long-Term Commitments Clients	Lake's Average Days since Admission	Stein Long-Term Commitments Clients	Stein Average Days since Admission
Jul-16	10	1,610	2	448
Aug-16	10	1,641	2	479
Sep-16	10	1,671	2	509
Oct-16	10	1,702	2	540
Nov-16	10	1,732	2	570
Dec-16	11	1,606	2	601
Jan-17	11	1,637	2	632
Feb-17	11	1,665	2	660
Mar-17	10	1,853	2	691
Apr-17	10	1,883	2	721
May-17	11	1,613	2	752
Jun-17	11	1,773	2	782
Jul-17	11	1,804	2	813
Aug-17	12	1,685	2	844
Sep-17	13	1,585	2	874
Oct-17	13	1,616	2	905
Nov-17	13	1,646	2	935
Dec-17	13	1,677	2	966





Adult Forensic Long-Term Commitments





THANK YOU!

DuAne Young, Deputy Administrator

duaneyoung@health.nv.gov

(775) 684-2224

Division of Public and Behavioral Health

State of Nevada